

The Emmylou



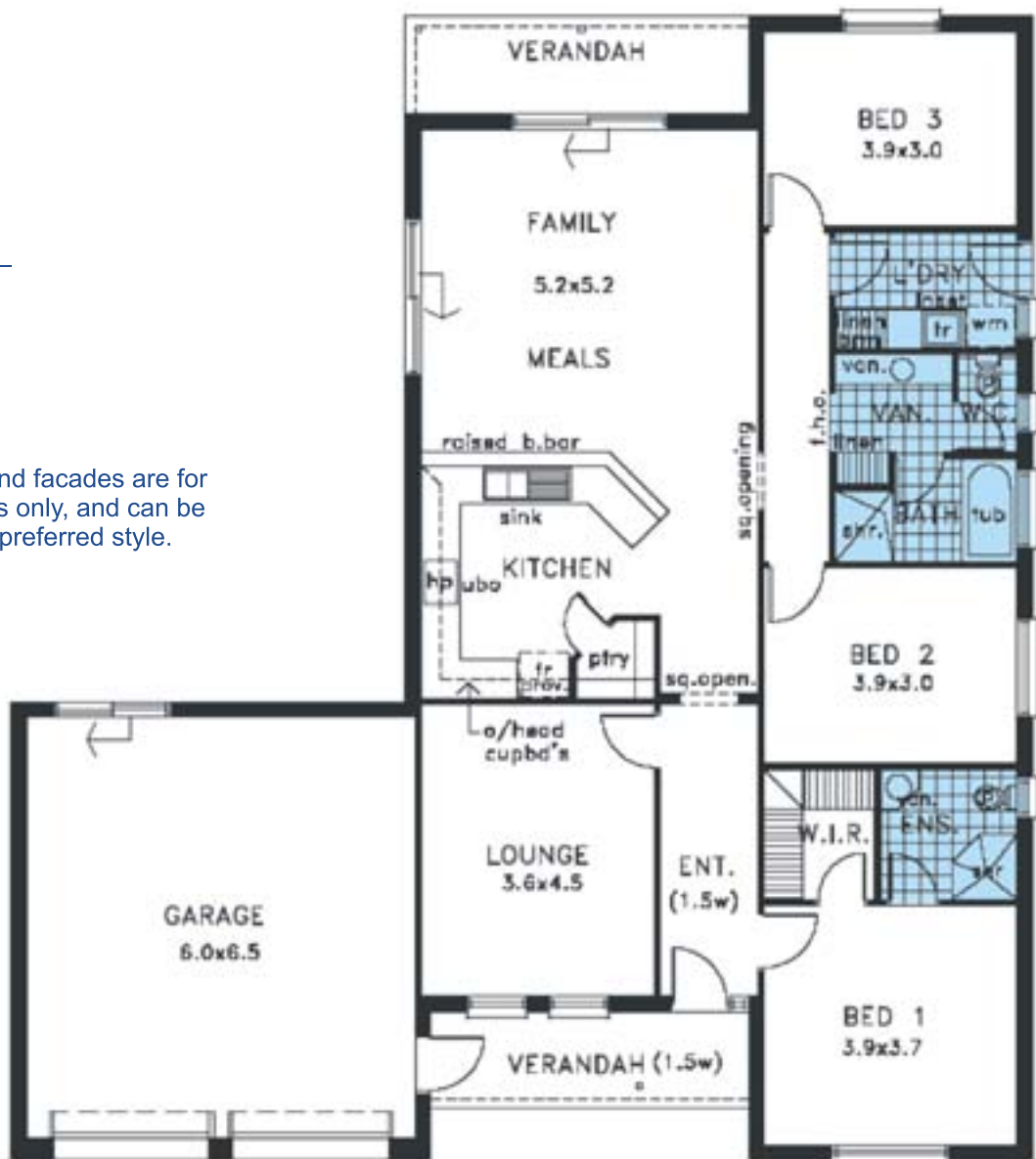
The efficient design of the Emmylou allows three bedrooms plus lounge and family rooms, whilst still being suited to compact allotments. Also included are a double garage, verandahs front and rear, walk in robe, ensuite and three-way bathroom.

Areas m²

M. Living	150.59
Garage	44.89
Verandah	15.31
Total	210.79

Depth	17.690m
Width	15.790m

Note: Floor plans and facades are for illustration purposes only, and can be altered to suit your preferred style.



Murray River Homes... "We have a passion for excellence"