

The Ellen



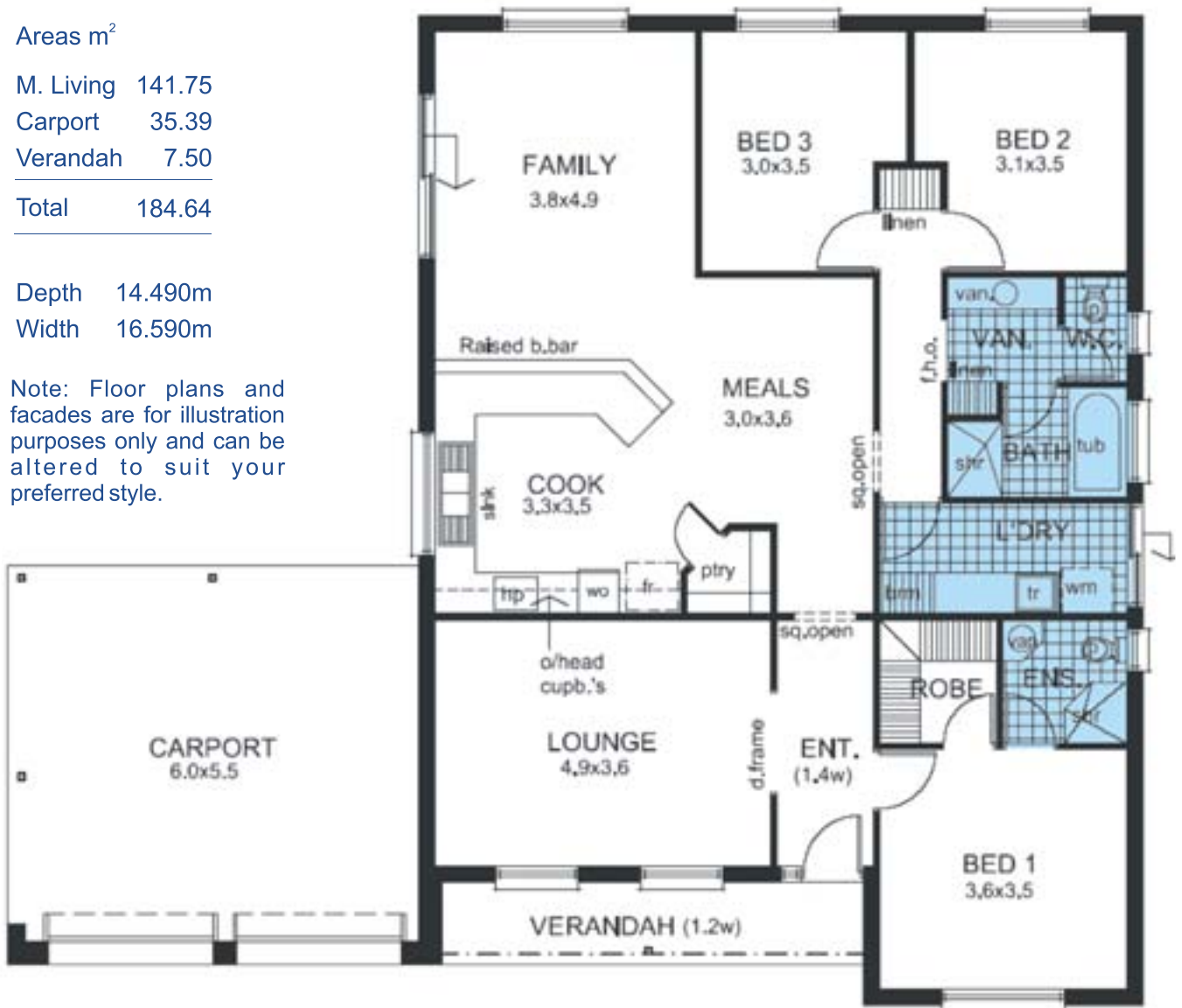
The Ellen is a popular design among clients looking for a traditional three bedroom home with modern conveniences. Bedrooms two and three have easy access to a luxury three-way bathroom. A walk in pantry, wall oven tower, overhead cupboards and raised breakfast bar have all been incorporated into the spacious kitchen design.

Areas m²

M. Living	141.75
Carport	35.39
Verandah	7.50
Total	184.64

Depth 14.490m
Width 16.590m

Note: Floor plans and facades are for illustration purposes only and can be altered to suit your preferred style.



Murray River Homes... "We have a passion for excellence"