

# The Coonawarra



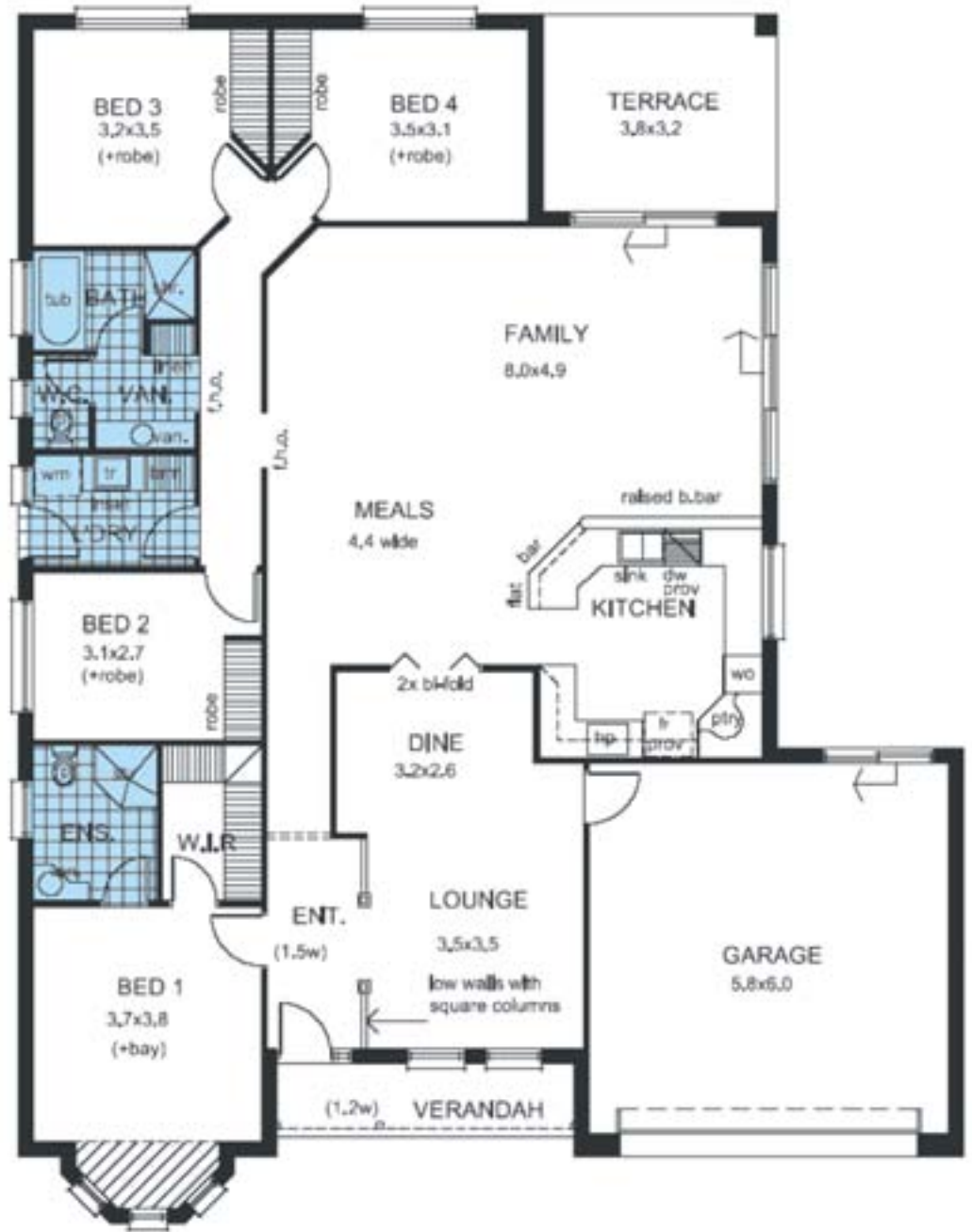
This is a classic family home featuring a separate dining and lounge area, plus an open plan kitchen, meals and family area. The design also includes a terrace under the main roof, Queen Anne bay window and ensuite.

## Areas m<sup>2</sup>

M. Living	190.53
Garage	39.56
Terrace	12.16
Verandah	5.77
<b>Total</b>	<b>248.02</b>

Depth 19.590m  
Width 15.290m

Note: Floor plans and facades are for illustration purposes only and can be altered to suit your preferred style.



*Murray River Homes... "We have a passion for excellence"*